

~~SECRET~~  
CIC-14 REPORT COLLECTION  
REPRODUCTION  
COPY ~~SECRET~~  
LAMS-1225

SAA 200131150000  
UNCLASSIFIED

~~UNCLASSIFIED~~  
~~RESTRICTED DATA~~  
The information contained in this report and its contents are the property of the U.S. Government and are loaned to Administrative and Criminal Services.

~~SECRET~~  
~~RL~~

DEPARTMENT OF ENERGY DECLASSIFICATION REVIEW	
1st REVIEW DATE: 9/19/00	DETERMINATION (CIRCLE NUMBER(S)) <input checked="" type="radio"/> 1. CLASSIFICATION RETAINED <input type="radio"/> 2. CLASSIFICATION CHANGED TO: <input type="radio"/> 3. CONTAINS NO DOE CLASSIFIED INFO <input type="radio"/> 4. COORDINATE WITH: <input type="radio"/> 5. CLASSIFICATION CANCELED <input type="radio"/> 6. CLASSIFIED INFO BRACKETED <input type="radio"/> 7. OTHER (SPECIFY: <u>DOE FILE NO 510199</u> )
AUTHORITY: <u>62</u>	
NAME: <u>L. WICKSTE</u>	
2nd REVIEW DATE: <u>3/17/99</u>	
AUTHORITY: <u>62</u>	
NAME: <u>W. PALATINI</u>	

70

~~SECRET~~

UNCLASSIFIED

~~THIS IS A COVER SHEET FOR A CLASSIFIED DOCUMENT~~

~~TRANSMITTAL OF THE DOCUMENT MUST BE COVERED BY A SIGNED RECEIPT. IT MUST NOT BE LEFT UNATTENDED OR WHERE AN UNAUTHORIZED PERSON MAY HAVE ACCESS TO IT. WHEN NOT IN USE, IT MUST BE STORED IN A LOCKED FILE OR SAFE. WHILE THIS DOCUMENT IS IN YOUR POSSESSION AND UNTIL YOU HAVE OBTAINED A SIGNED RECEIPT UPON ITS TRANSFER TO AN AUTHORIZED INDIVIDUAL, IT IS YOUR RESPONSIBILITY TO KEEP IT AND ITS CONTENTS FROM ANY UNAUTHORIZED PERSON.~~

~~CAUTION~~

~~"THIS DOCUMENT CONTAINS INFORMATION AFFECTING THE NATIONAL DEFENSE OF THE UNITED STATES. ITS TRANSMISSION OR THE DISCLOSURE OF ITS CONTENTS IN ANY MANNER TO AN UNAUTHORIZED PERSON IS PROHIBITED AND MAY RESULT IN SEVERE CRIMINAL PENALTIES UNDER APPLICABLE FEDERAL LAWS."~~

~~RESTRICTED DATA~~

~~"THIS DOCUMENT CONTAINS RESTRICTED DATA AS DEFINED IN THE ATOMIC ENERGY ACT OF 1946."~~

UNCLASSIFIED

~~SECRET~~

~~SECRET~~ /RD

UNCLASSIFIED

LOS ALAMOS SCIENTIFIC LABORATORY  
of  
THE UNIVERSITY OF CALIFORNIA

March 9, 1951

LAMS-1225

This document consists of 20 pages.  
No. 20 of 20 copies. Series A

ON HETEROCATALYTIC DETONATIONS I. (U)  
Hydrodynamic Lenses and Radiation Mirrors

Work done by:

E. Teller  
S. Ulam

Report written by:

E. Teller  
S. Ulam

UNCLASSIFIED

WEAPON DATA

~~SECRET~~ /RD

UNCLASSIFIED

WEAPON DATA

APR 20 1950

LAMS-1225

Washington Document Room  
J R. Oppenheimer  
Los Alamos Document Room

1 thru 4  
5  
6 thru 20

UNCLASSIFIED

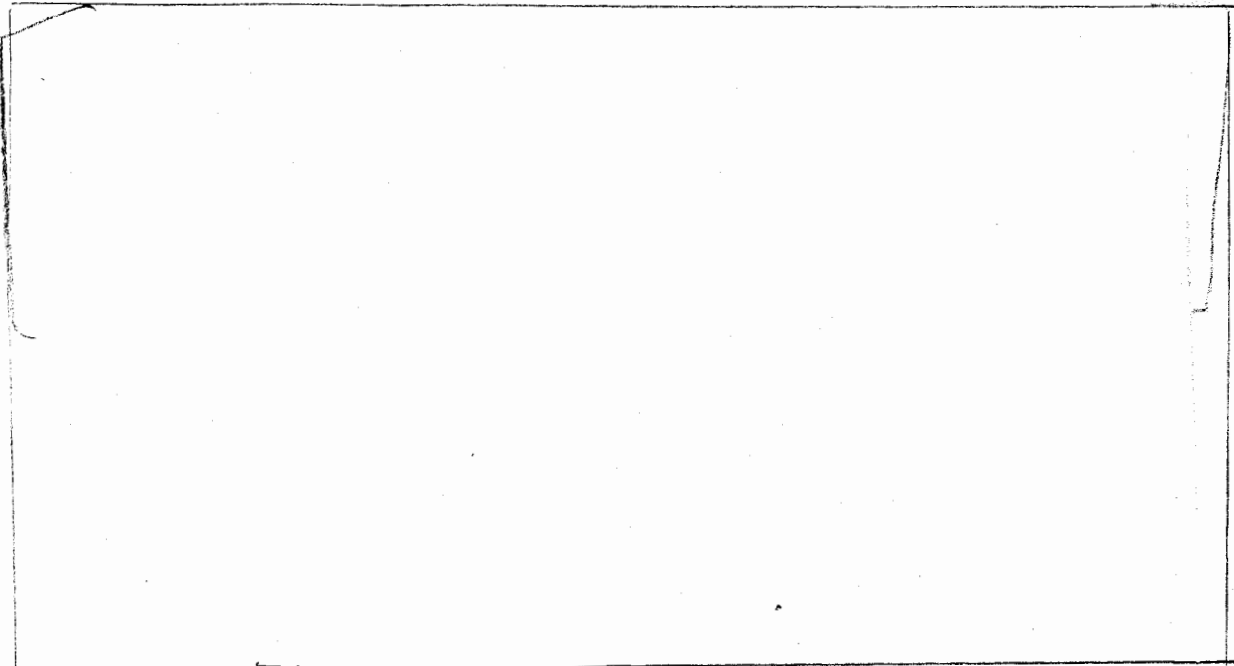
ON HETEROCATALYTIC DETONATIONS I.Hydrodynamic Lenses and Radiation MirrorsIntroduction

In this discussion the following general scheme is considered. By an explosion of one or several conventional auxiliary fission bombs, one hopes to establish conditions for the explosion of a "principal" bomb. This latter may be either a fission or a thermonuclear assembly.

We propose to discuss certain general features of such an arrangement. The main purpose of the "auxiliary" system is to induce very high compressions in the principal assembly. It is known (L. W. Nordheim, unpublished data) that, for example, in the "Alarm Clock" high compressions of the active core will permit economy in the tritium put initially into the system and may be instrumental in starting thermonuclear reactions in assemblies of a feasible size. Ordinarily one uses high explosives as the auxiliary system. Great compression can be obtained, but the size of the highly compressed region is small. In certain thermonuclear arrangements, like the Alarm Clock, the size and the mass of the material to be compressed is so great that inordinate amounts of HE would have to be used. We have the following situation in mind, as an example.

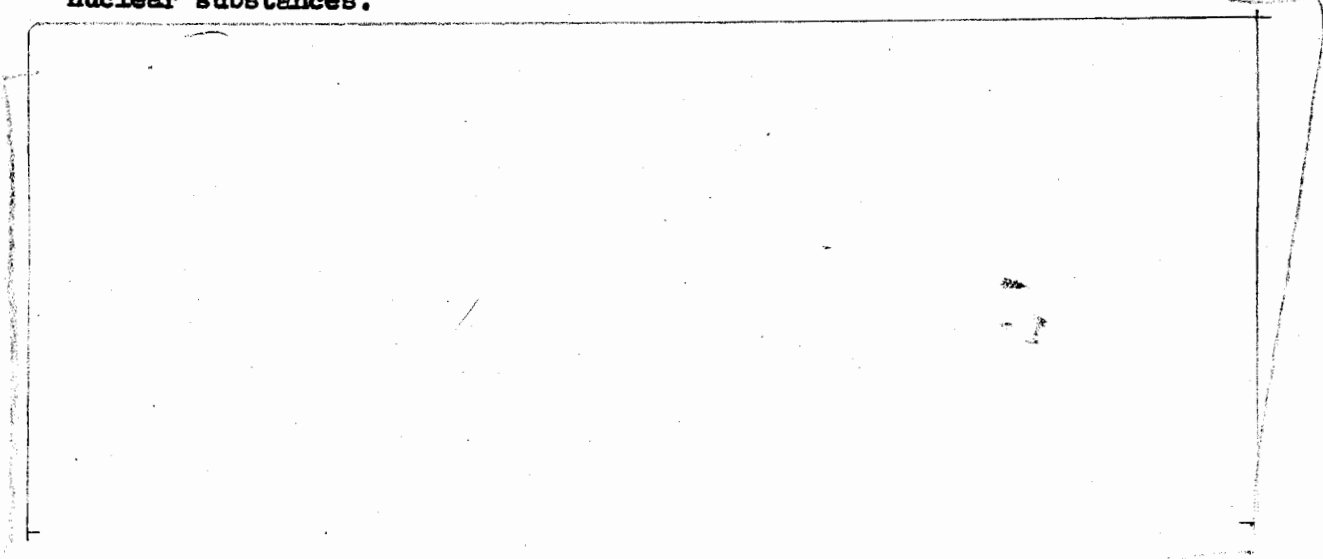
63

b3



We shall discuss in the sequel the hoped-for compressions.

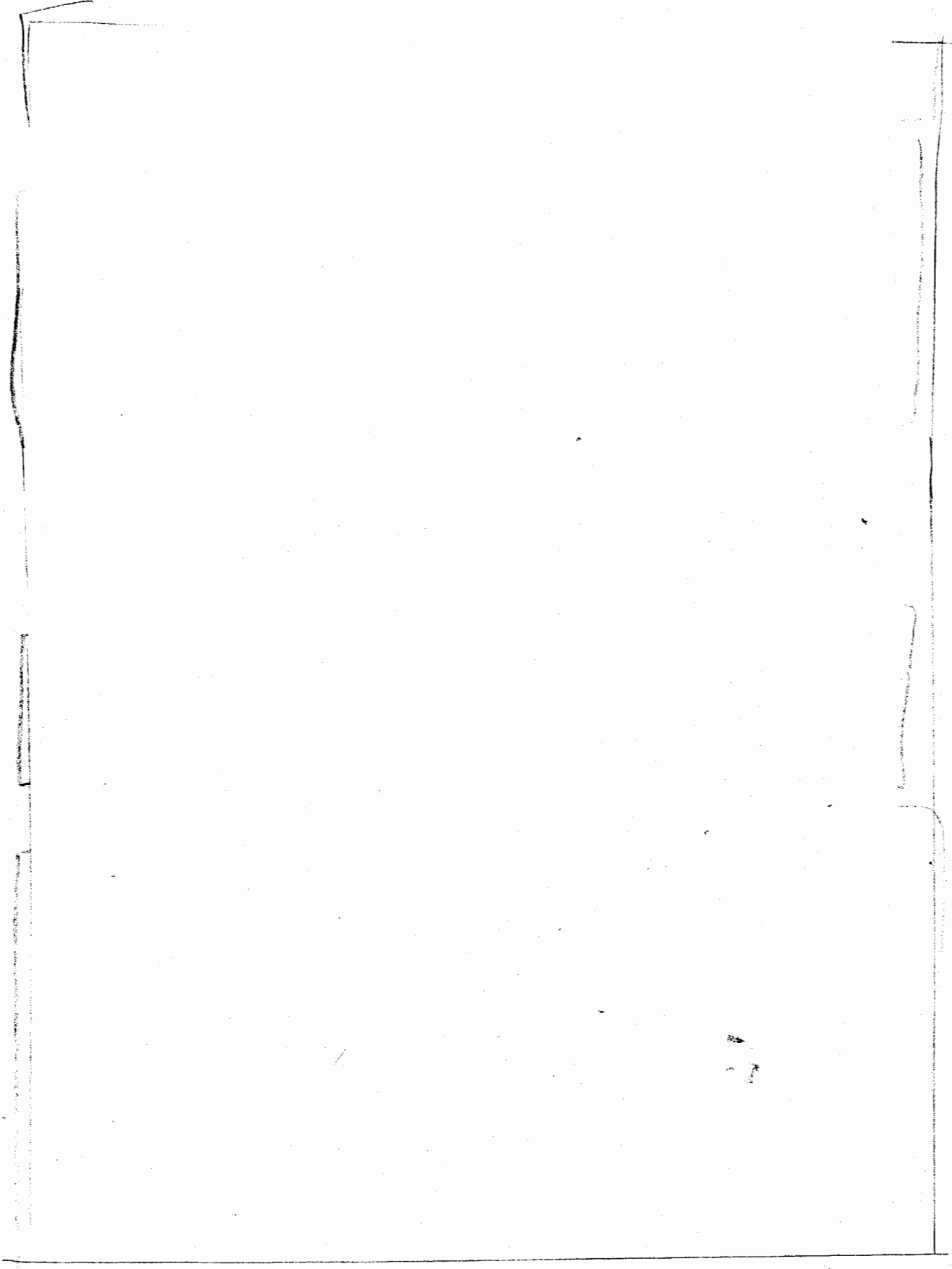
The arrangement might be called heterocatalytic, involving as it does a setting off of a reaction in one system by a reaction started in another material--the "auxiliary" arrangement is located at a considerable distance (from the purely nuclear point of view), like 50 cm to 5 meters. This is in distinction to hitherto-considered autocatalytic schemes based essentially on self-implosions of a mixture of nuclear substances.



b3

~~SECRET~~ / RD

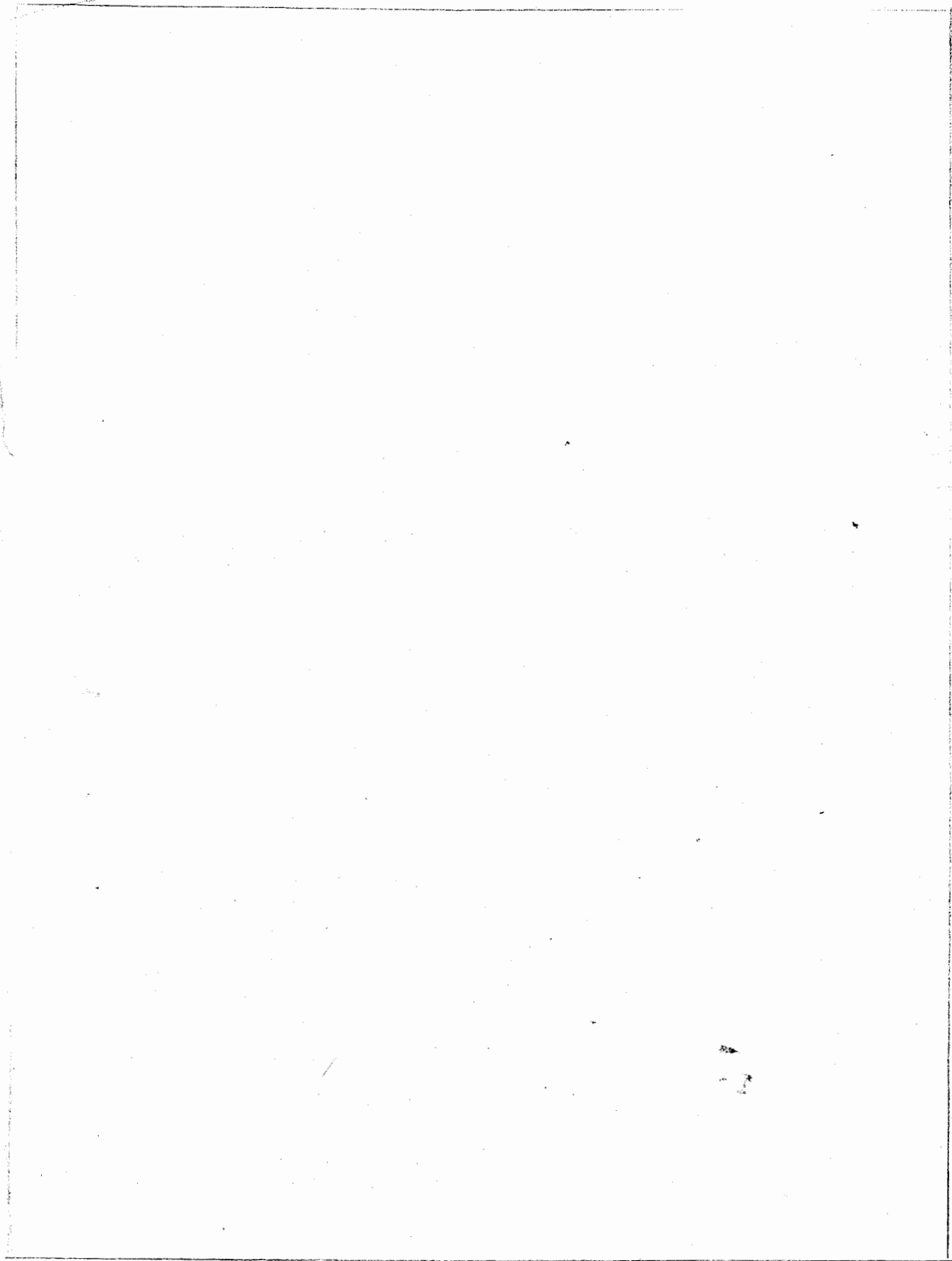
63



~~SECRET~~ / RD

UNCLASSIFIED

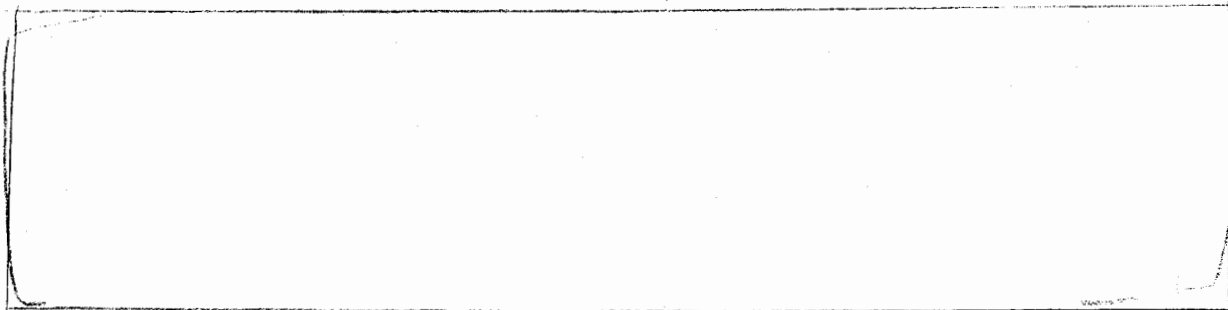
~~SECRET~~ /RD



~~SECRET~~ /RD

UNCLASSIFIED





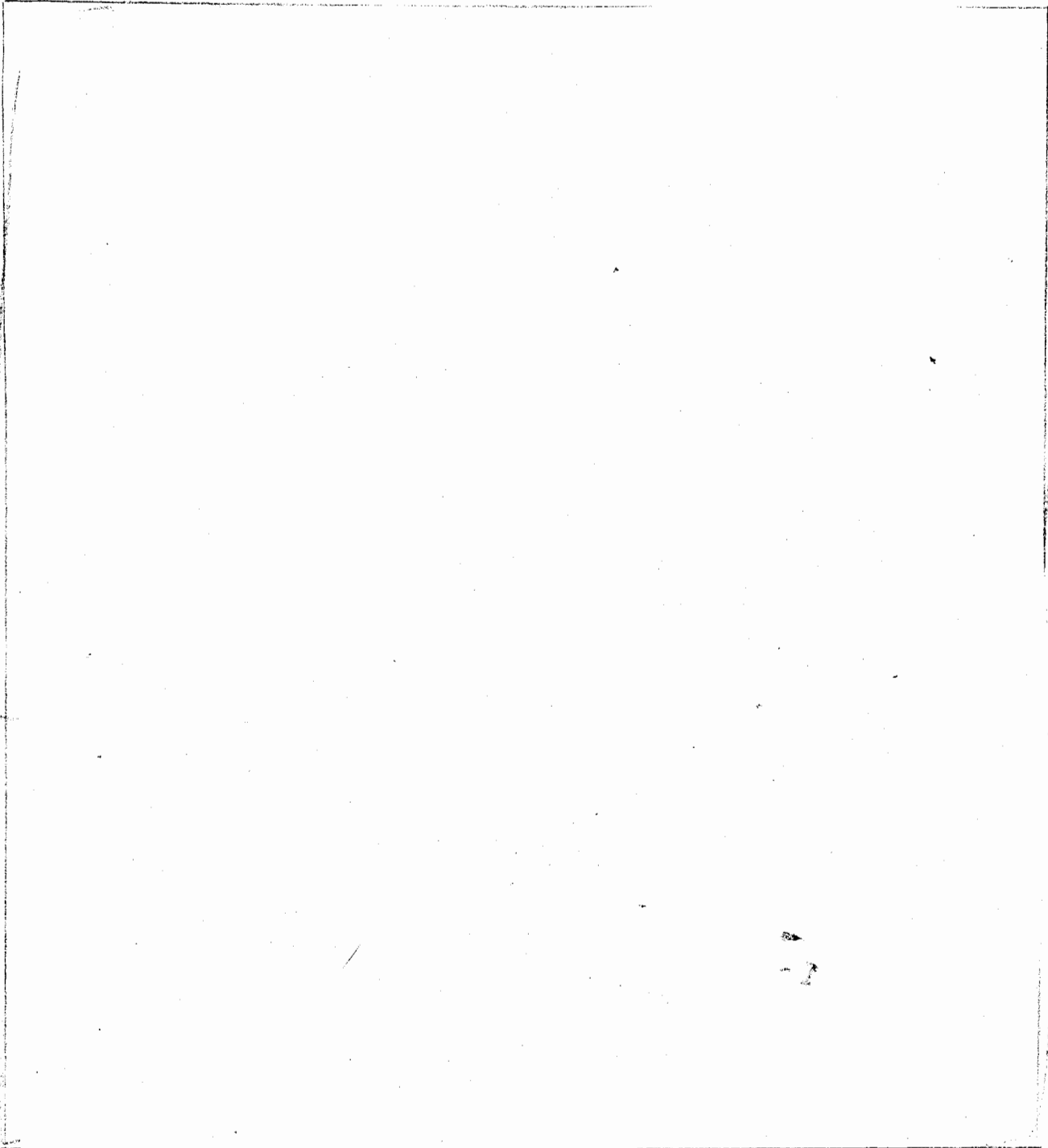
The difference of sound velocities is due to three reasons.

One is the difference in average atomic weights, due primarily to the different degrees of ionization. Thus a light element like carbon would be almost completely ionized and would behave like a gas of approximate atomic weight 2. Uranium, on the other hand, would suffer approximately 10-fold ionization and would have an effective atomic weight near 8. The ratio four in atomic weights would give rise to a factor two in sound velocities. The higher velocity is of course to be expected in carbon.

A second reason for a difference in sound velocities is the fact that a completely ionized material acts like a monatomic gas with  $\gamma = \frac{5}{3}$ , whereas uranium, in which ionization is still proceeding, has probably a  $\gamma$ -value near 1.4. This will increase the ratio of sound velocities by another 10%.

The third reason is that the same shock strength will produce a lower temperature in a material of higher density since in each material the given energy density is distributed among more particles. This effect might give rise to temperature ratios as high as a factor four and to sound velocity ratios as high as a factor two. (In principle this effect could be made even greater but one would soon begin to lose by poor matching of acoustic impedance.)

It is, therefore, reasonable to assume that materials can be found in which sound velocities differ by a factor somewhere between 2 and 4. There should be no difficulty in making materials of any intermediate sound velocity.



UNCLASSIFIED

~~SECRET / RD~~

03

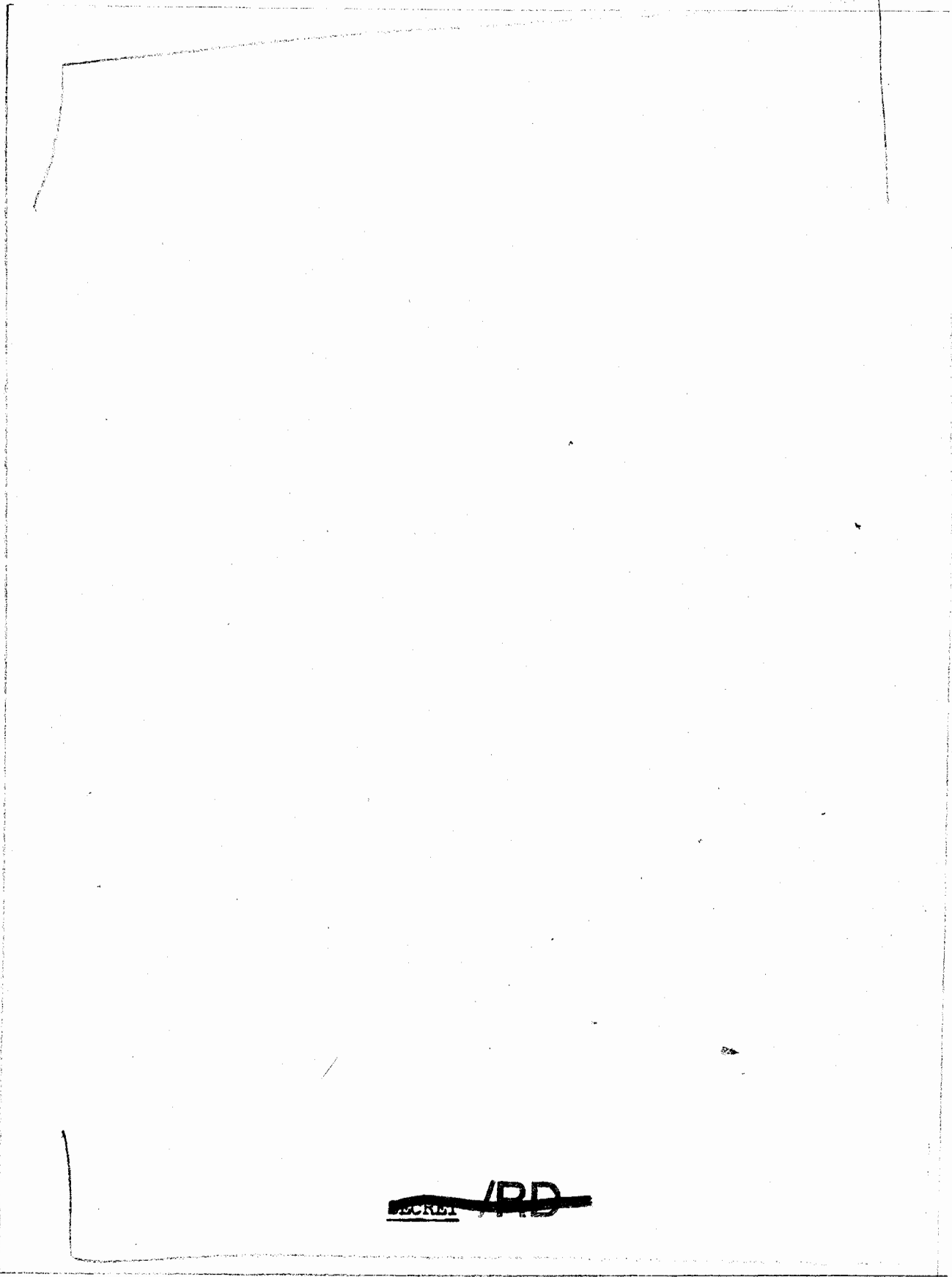


FIGURE 1

~~SECRET / RD~~

UNCLASSIFIED

UNCLASSIFIED

~~SECRET~~ / RD

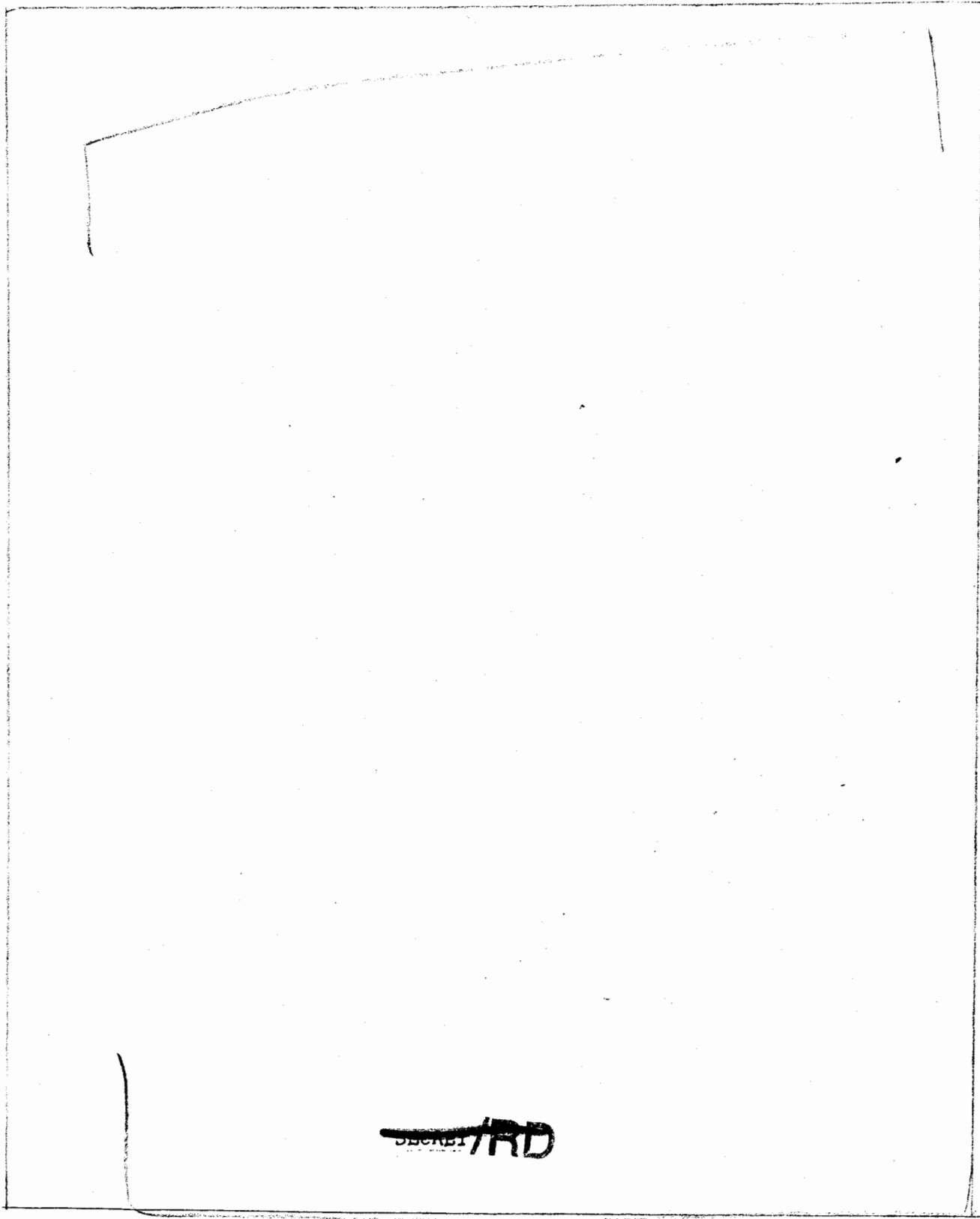
b3

~~SECRET~~ / RD

UNCLASSIFIED

UNCLASSIFIED

~~SECRET~~ / RD



63

FIGURE 2

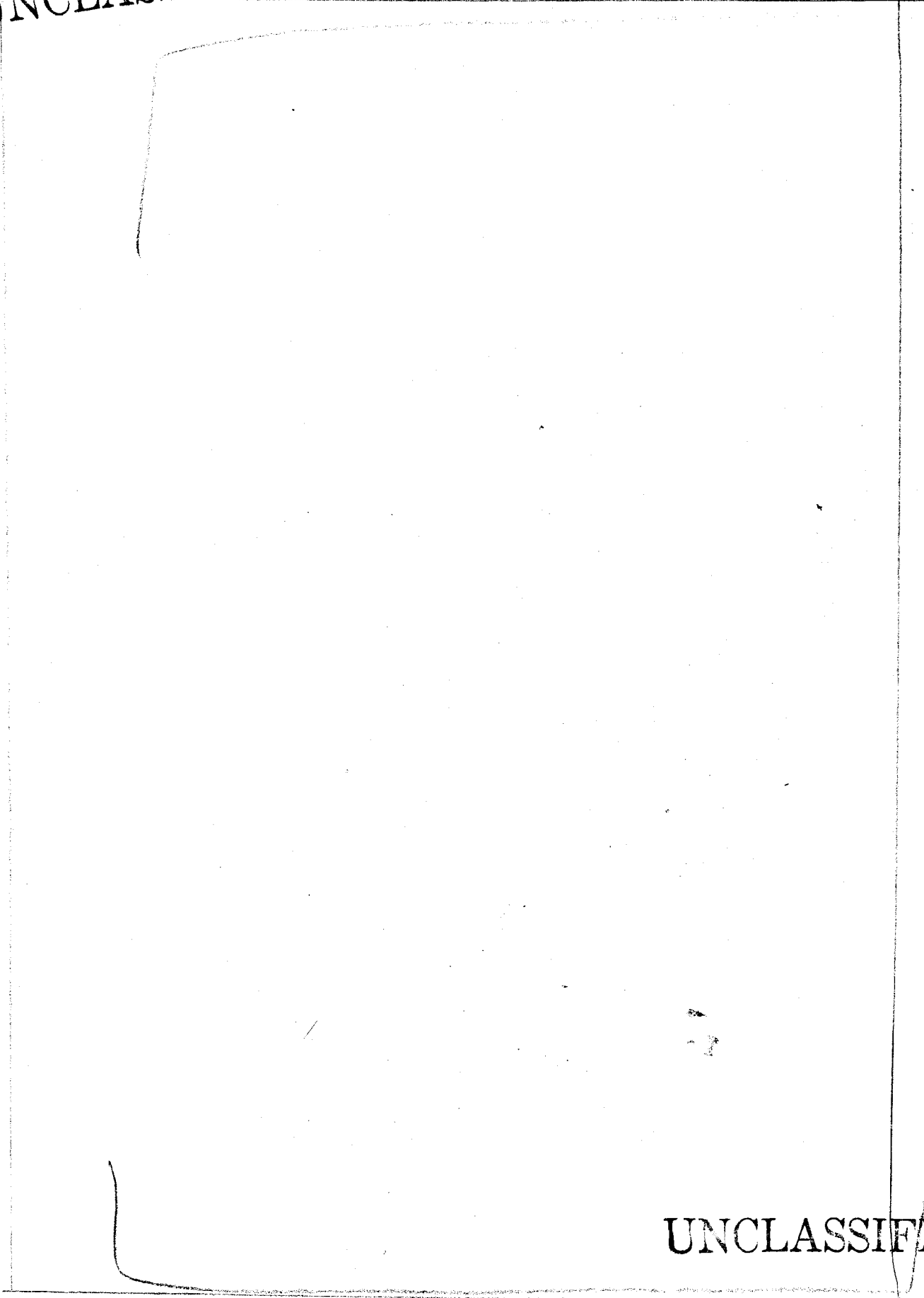
~~SECRET~~ / RD

11

UNCLASSIFIED

UNCLASSIFIED

~~SECRET/AD~~



b3

FIGURE 3

UNCLASSIFIED

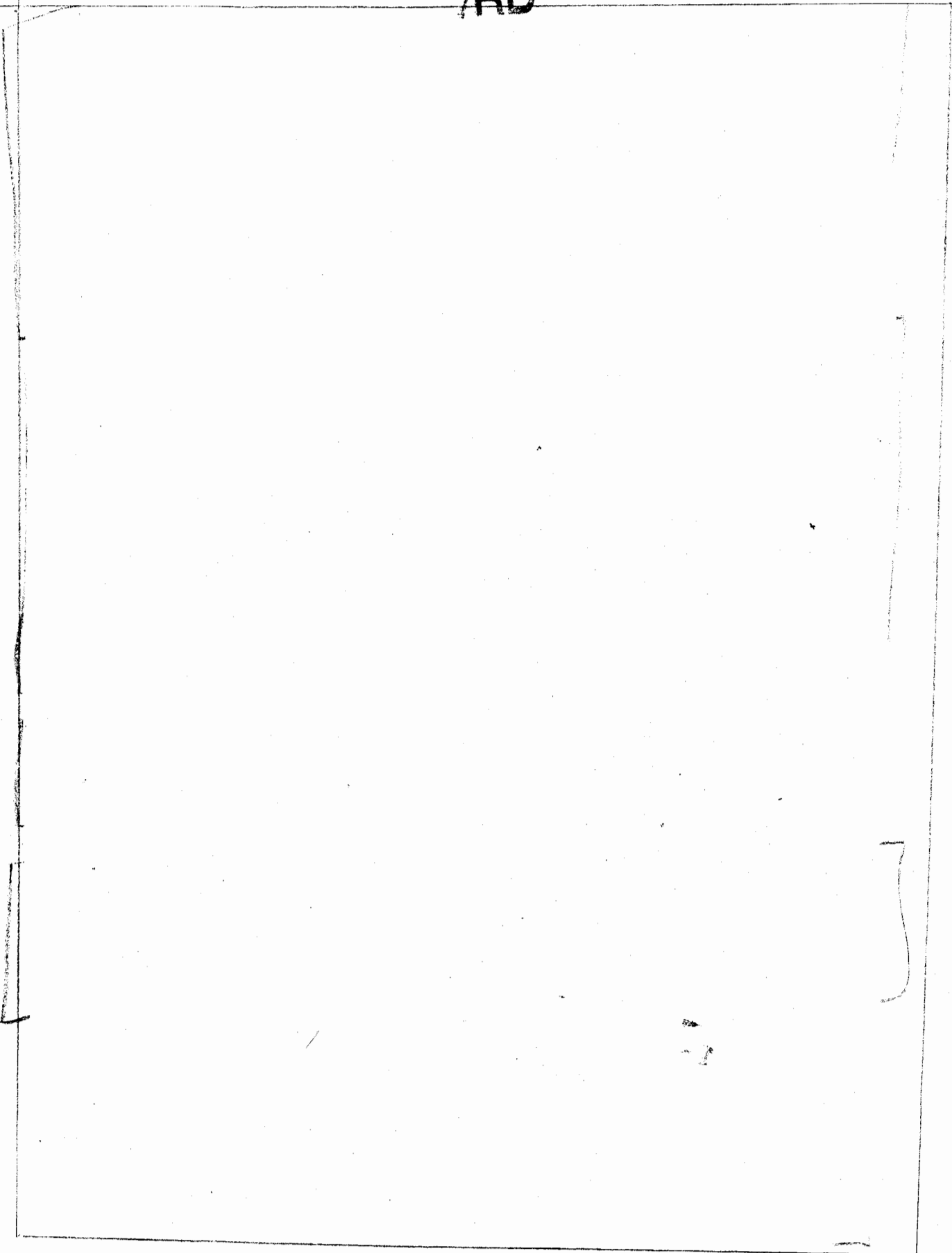
~~SECRET/AD~~

b3

UNCLASSIFIED

~~SECRET~~ / RD

D3



~~SECRET~~ / RD

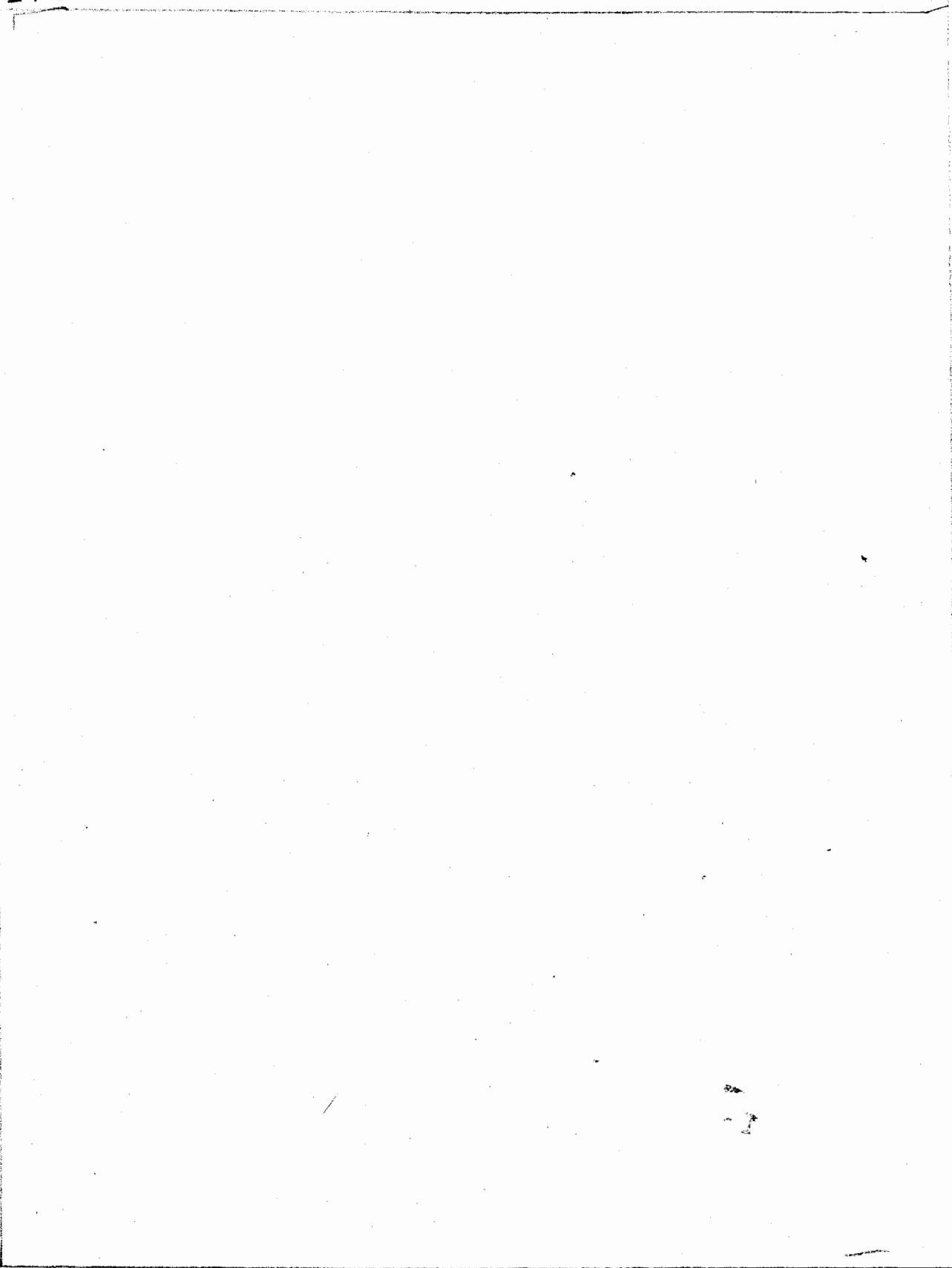
UNCLASSIFIED



UNCLASSIFIED

~~SECRET~~ / RD

63



~~SECRET~~ / RD

UNCLASSIFIED

UNCLASSIFIED

~~SECRET~~ / RD

b2

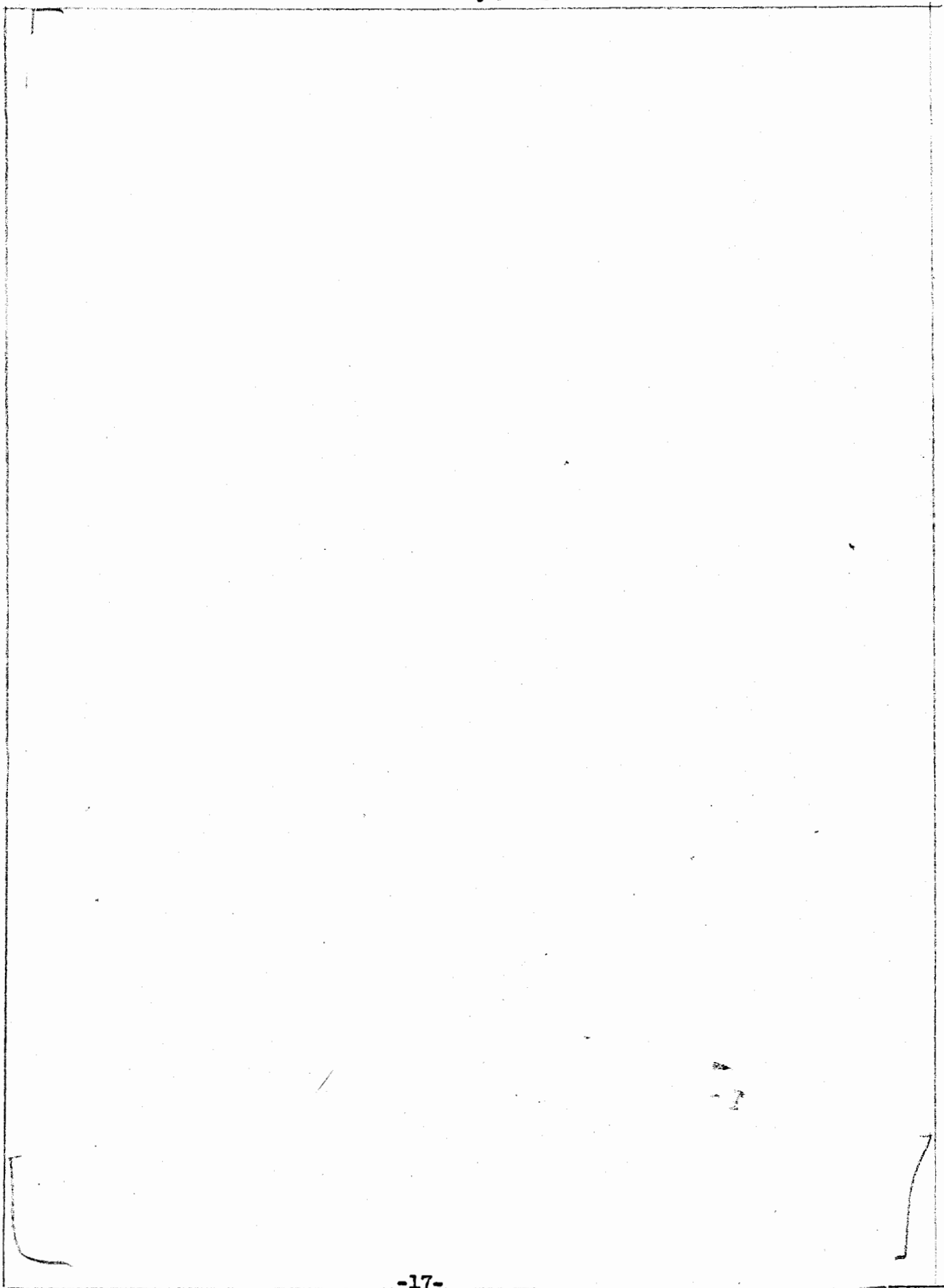
FIGURE 4

UNCLASSIFIED

~~SECRET~~ / RD

UNCLASSIFIED

~~SECRET~~ / RD



b3

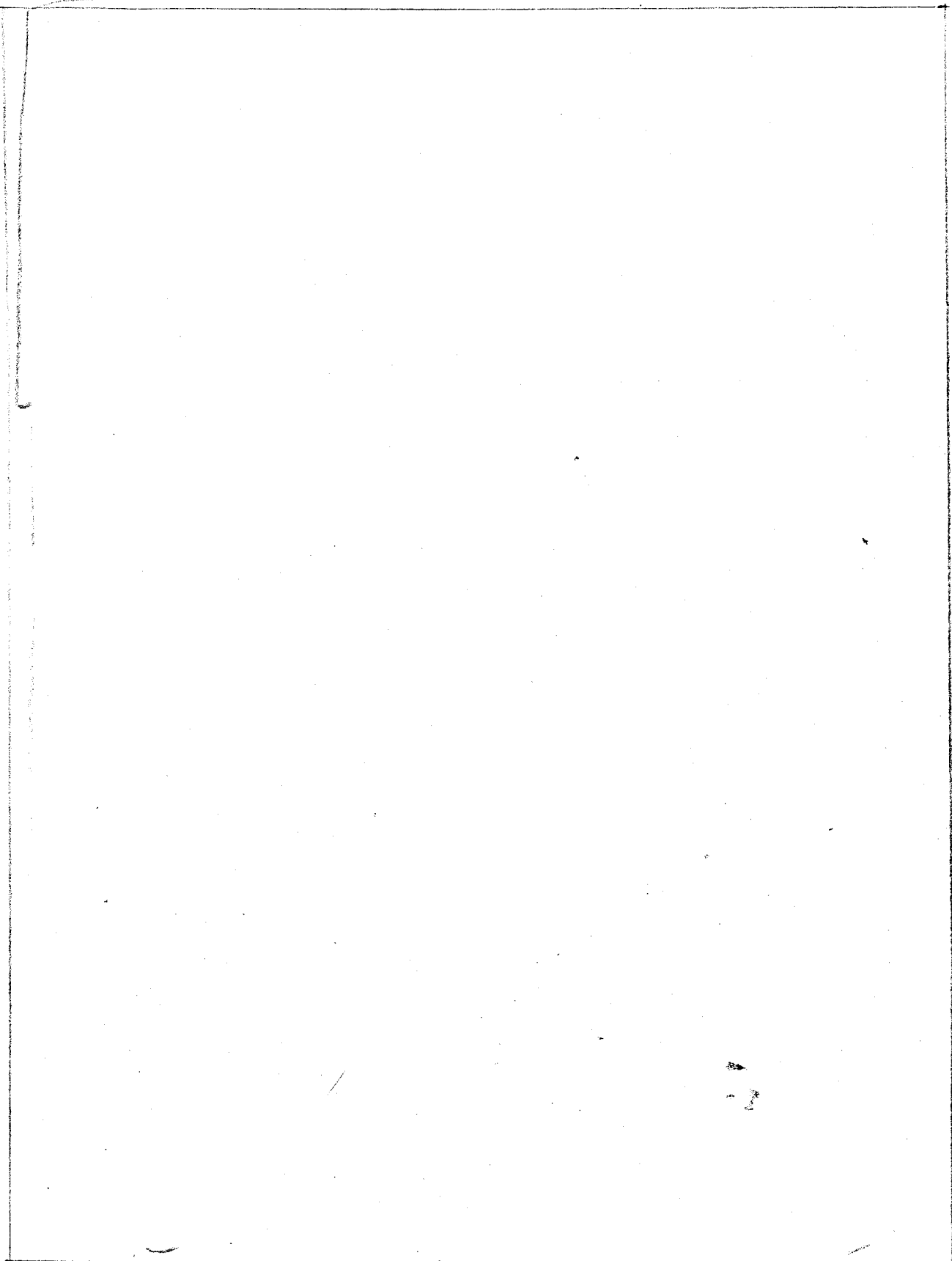
~~SECRET~~ / RD

UNCLASSIFIED

UNCLASSIFIED

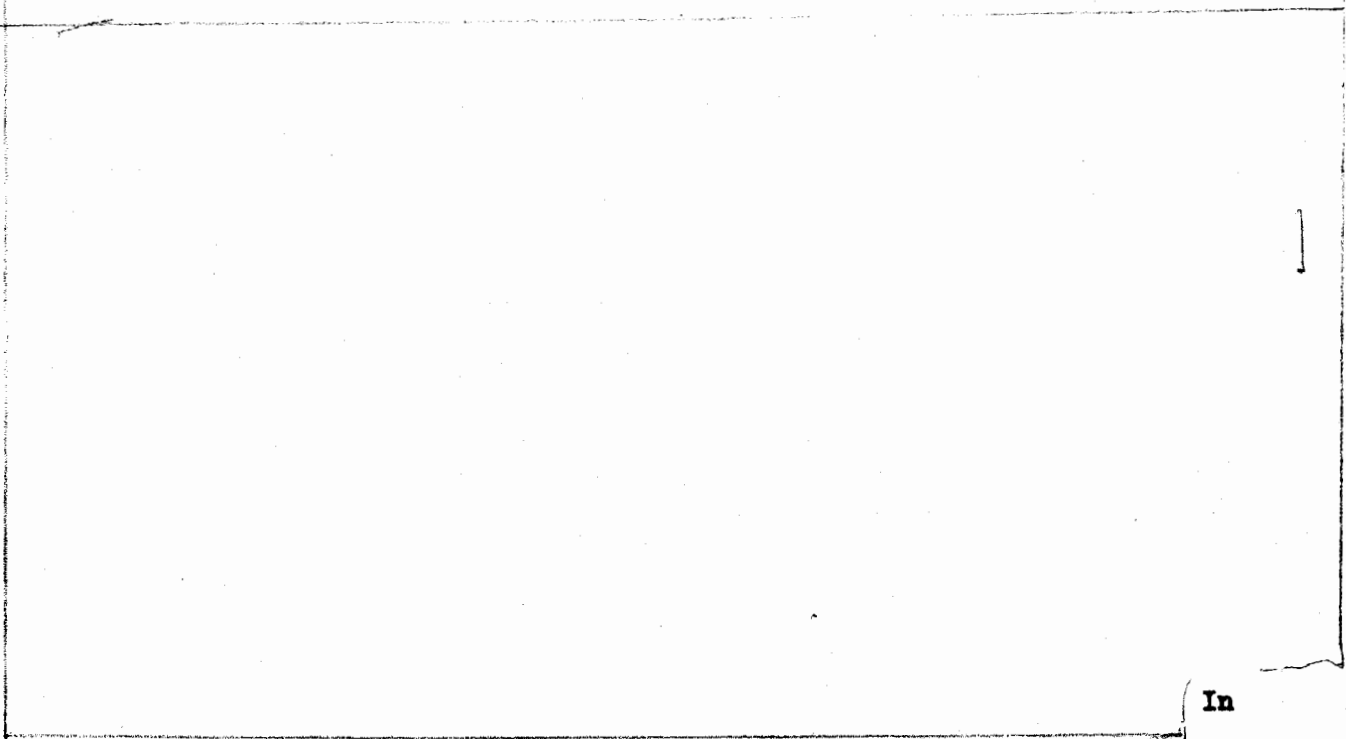
~~SECRET /RD~~

63



~~SECRET /RD~~

UNCLASSIFIED

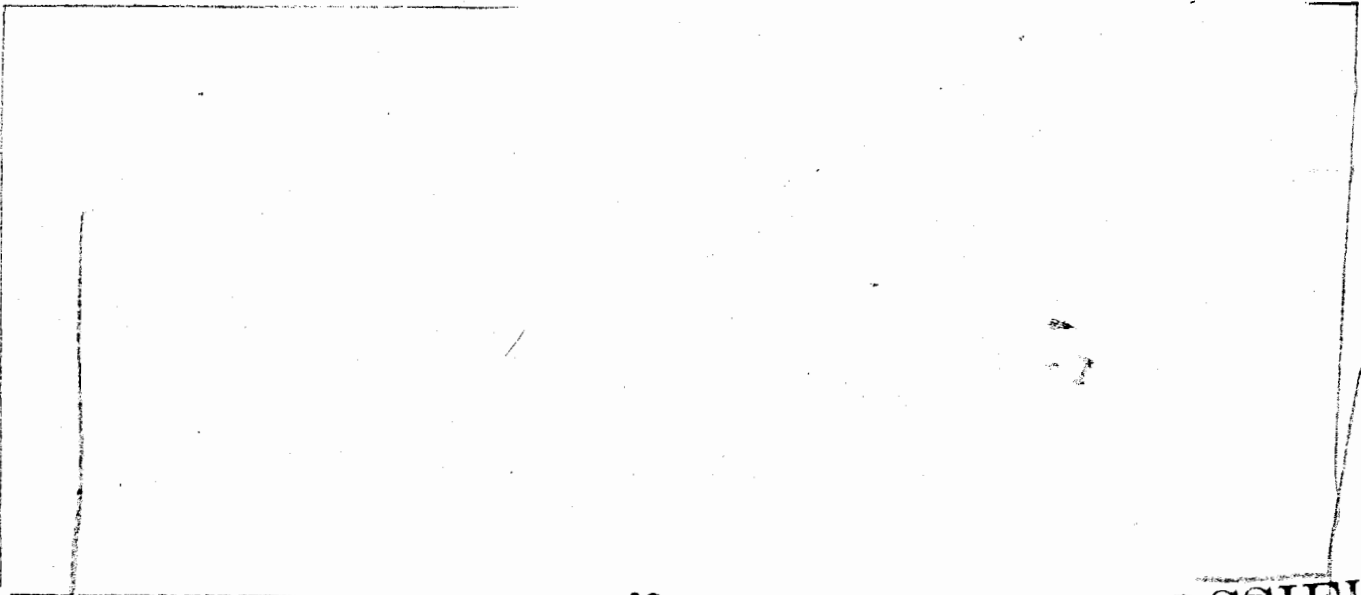


b3

In

fact, the essential parts of the design do not depend sensitively on complicated shapes and the necessary planning is, therefore, comparatively simple.

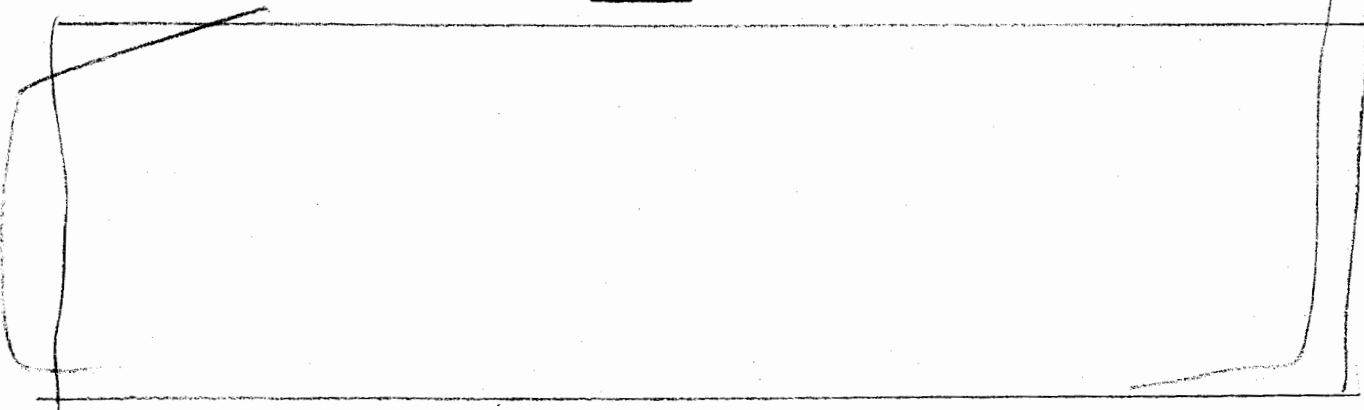
The proposals are outlined here extremely sketchily. Quantitative work to elaborate these general suggestions would have to include the following calculations:



b3

~~SECRET~~ / RD

UNCLASSIFIED



b3

~~SECRET~~ / RD

UNCLASSIFIED