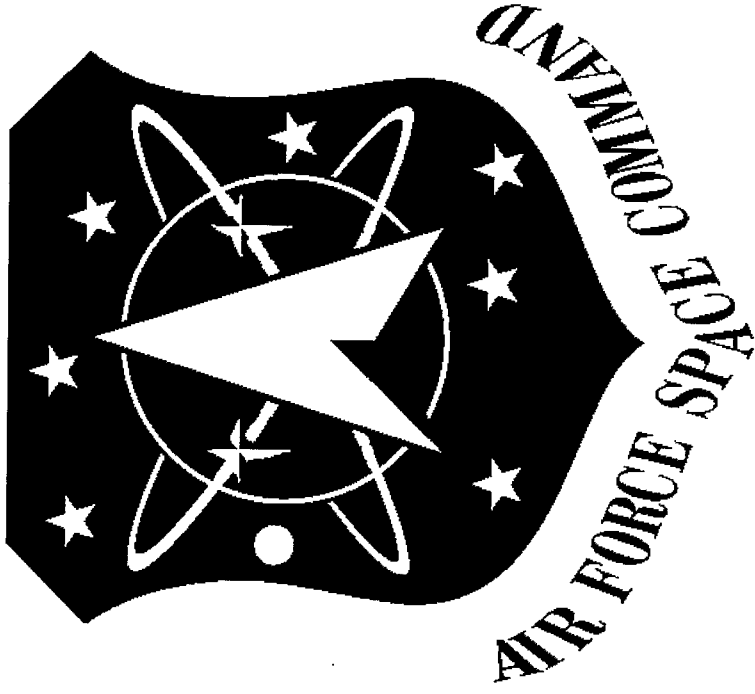


ORGANIZATION CHART BOOK



COMMANDER GENERAL C. ROBERT KEHLER

VICE COMMANDER MAJOR GENERAL MICHAEL J. BASLA

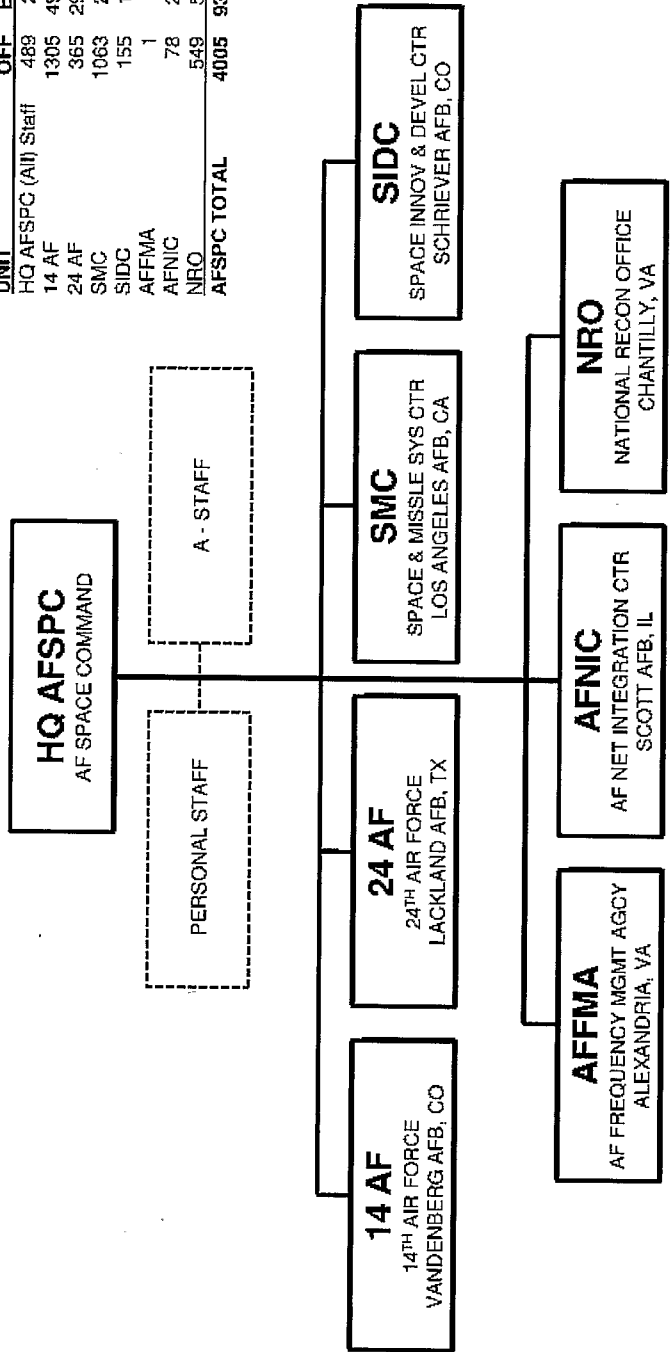
1 JAN 10



Peterson AFB, CO

AF Space Command

UNIT	OFF	ENL	CIV	Total	CME
HQ AFSPC (All) Staff	489	283	635	1407	419
14 AF	1305	4991	3949	10245	8179
24 AF	365	2981	775	4121	1364
SMC	1063	252	1606	2921	2726
SIDC	155	138	109	402	190
AFFMA	1	6	25	32	6
AFNIC	78	208	319	605	119
NRO	549	511	429	1489	16
AFSPC TOTAL	4005	9370	7847	21222	13186





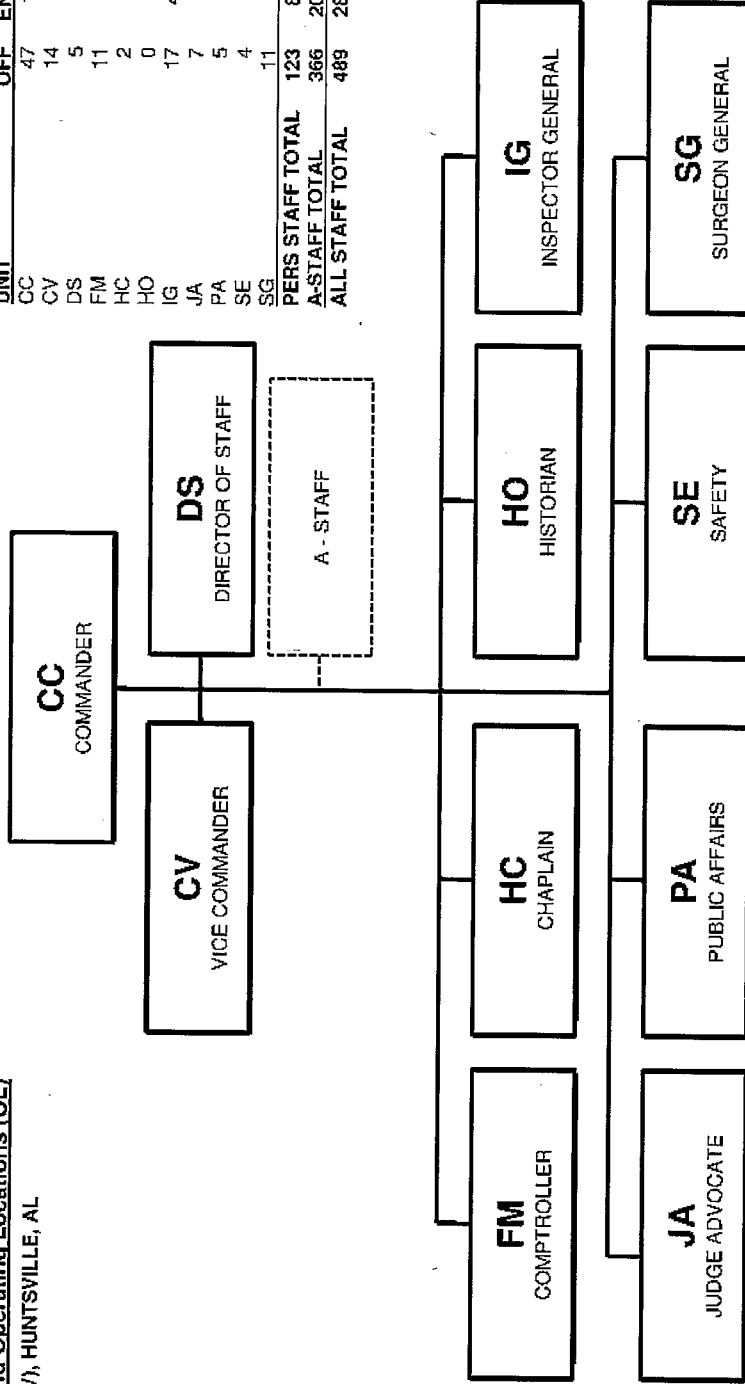
Peterson AFB, CO

HQ AFSPC Personal Staff

Detachments (Det) and Operating Locations (OL)

HQ AFSPC, OL F (CV), HUNTSVILLE, AL

UNIT	OFF	ENL	CIV	Total	CME
CC	47	12	16	75	0
CV	14	3	10	27	0
DS	5	8	10	23	0
FM	11	4	30	45	0
HC	2	2	1	5	0
HO	0	0	5	5	0
IG	17	41	12	70	0
JA	7	2	4	13	0
PA	5	6	10	21	0
SE	4	2	8	14	0
SG	11	3	5	19	0
PERS STAFF TOTAL	123	83	111	317	0
A-STAFF TOTAL	366	200	524	1090	419
ALL STAFF TOTAL	489	283	635	1407	419





Peterson AFB, CO

HQ AFSPC A-Staff

UNIT	OFF	ENL	CIV	Total	CME
A1	23	19	48	90	1
A2	27	22	25	74	12
A3	96	37	76	209	76
A4A7	55	75	161	291	48
A5	82	10	43	135	177
A6	27	33	87	147	74
A8A9	56	4	84	144	31
A-STAFF TOTAL	366	200	524	1090	419

