

(b)(1)

(b)(3)

EO 12958 1.4(b)<25Yrs

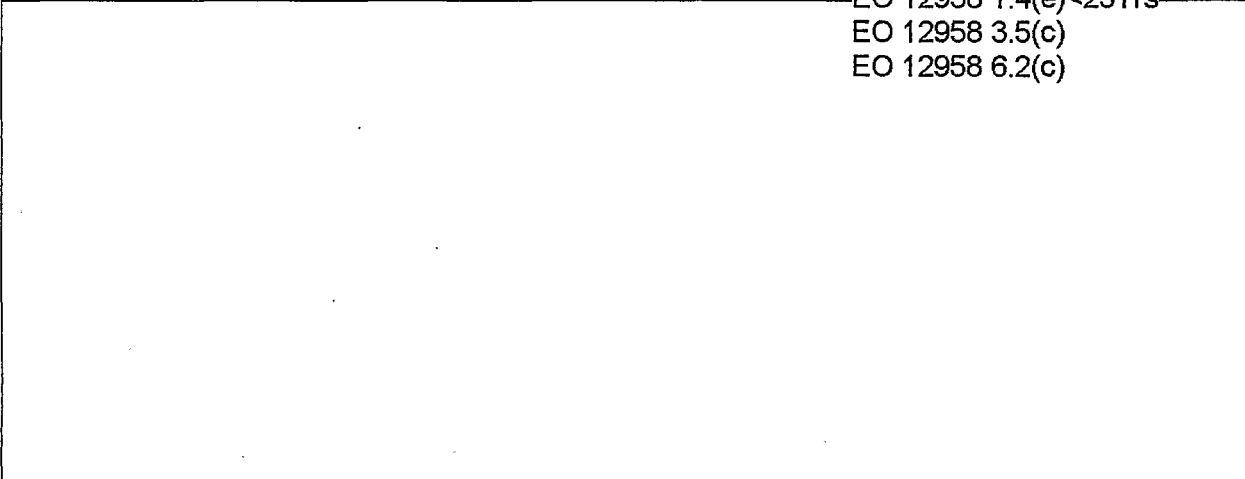
EO 12958 1.4(c)<25Yrs

EO 12958 1.4(e)<25Yrs

EO 12958 3.5(c)

EO 12958 6.2(c)

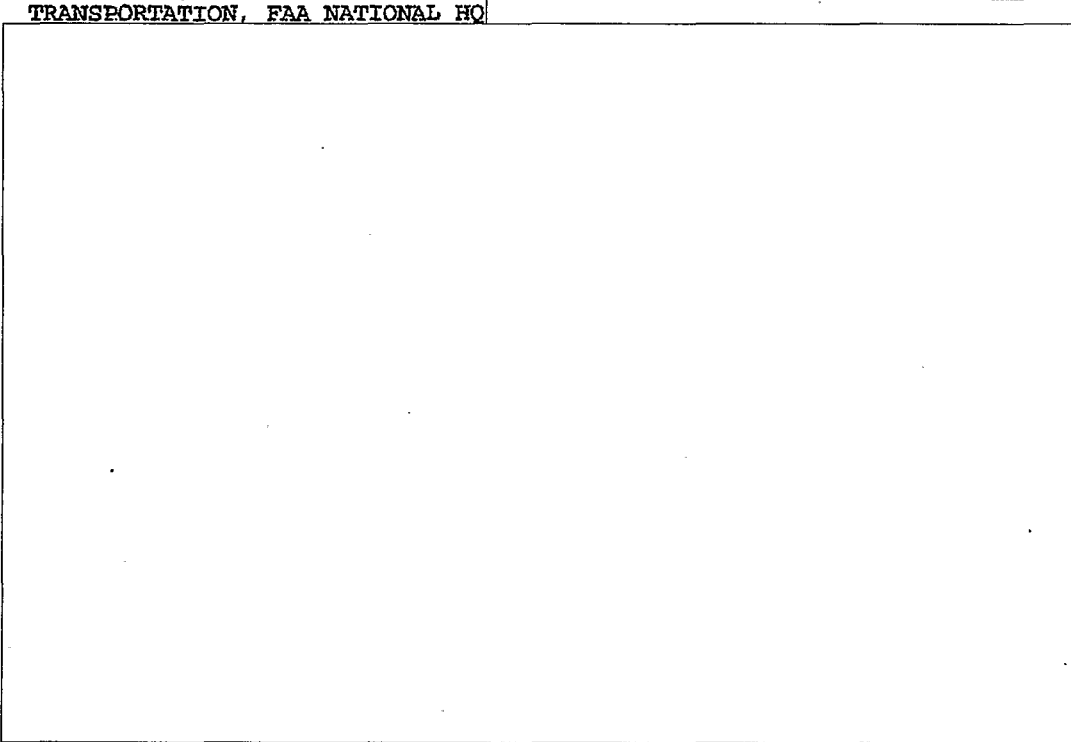
~~SECRET~~



TOT: 192036Z DEC 96



TO: PRIORITY DIRNSA, SECSTATE WASHDC, DIA WASHINGTON DC, DA WASHINGTON DC, ONI WASHINGTON DC, CNO WASHINGTON DC, CMC WASHINGTON DC, CSAF WASHINGTON DC, TREASURY DEPT, SECRET SERVICE, FEDERAL BUREAU OF INVESTIGATION, DEPARTMENT OF JUSTICE WASH DC//OIPR//, WHITE HOUSE SITUATION ROOM, ZEN/DEPT OF TRANSPORTATION, FAA NATIONAL HQ



CENTRAL INTELLIGENCE AGENCY

WARNING: INFORMATION REPORT, NOT FINALLY EVALUATED INTELLIGENCE

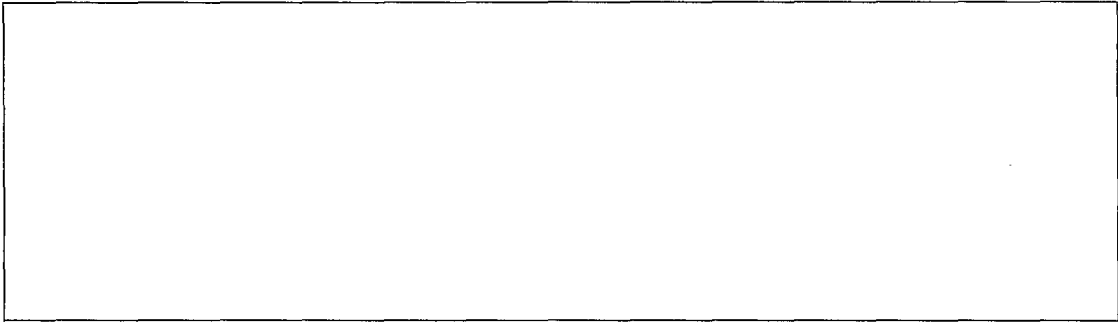
APPROVED FOR  
RELEASE DATE:  
25-April-2012

~~SECRET~~

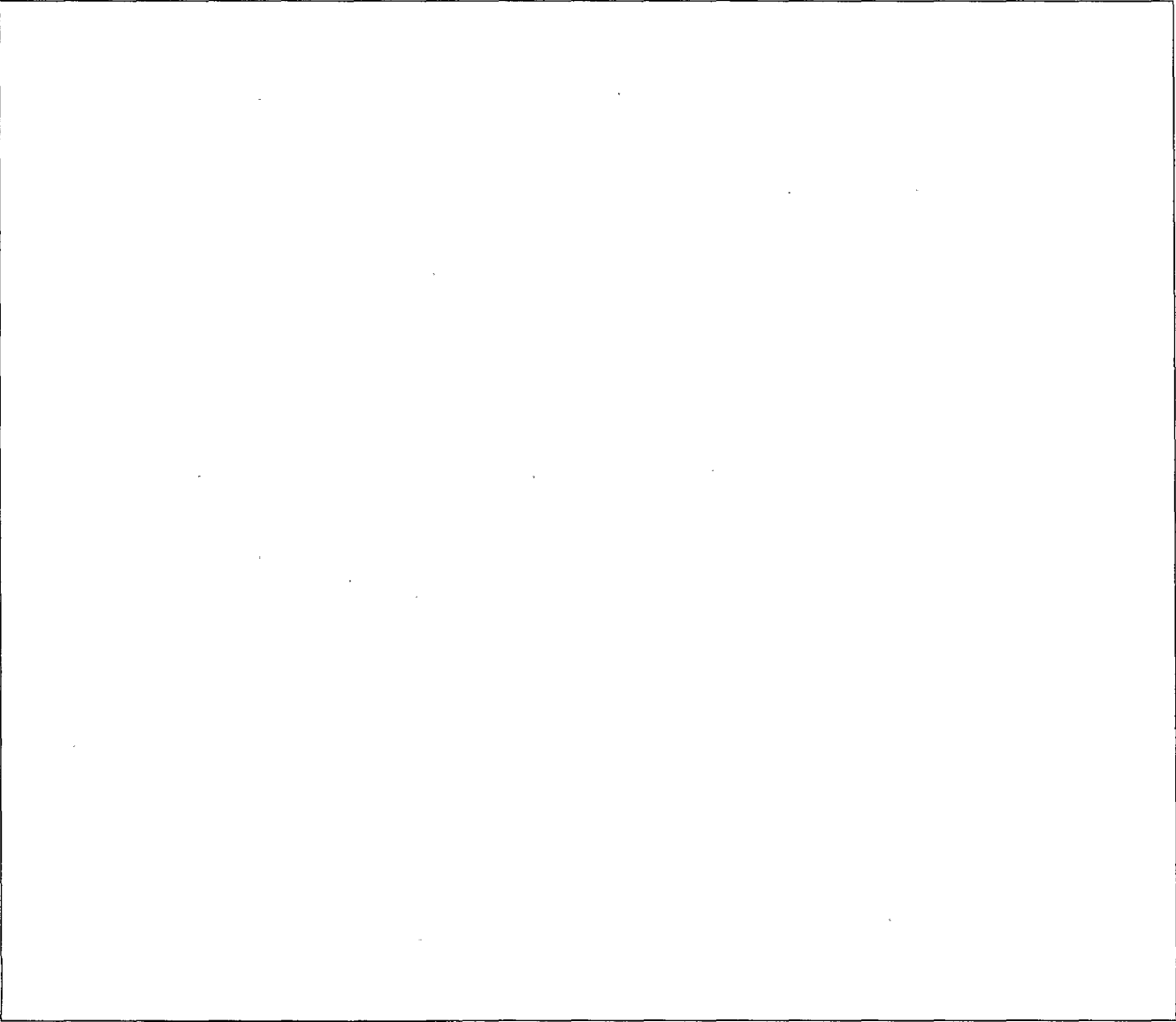
-----  
DIST: 19 DECEMBER 1996

COUNTRY: SUDAN/INTERNATIONAL

SUBJ: TERRORISM: RESPONSIBILITIES AND BACKGROUND OF ISLAMIC  
ARMY SHURA COUNCIL MEMBERS



THE SHURA COUNCIL OF USAMA ((BIN LADIN))'S ISLAMIC ARMY CONSISTED OF A VARIETY OF MEMBERS WHO REPRESENT ISLAMIC EXTREMISTS GROUPS OR CELLS WORLD-WIDE. THESE GROUPS OPERATE BOTH AUTONOMOUSLY AND AS ISLAMIC ARMY PARTICIPANTS.



~~SECRET~~

~~SECRET~~

~~SECRET~~

~~SECRET~~

~~SECRET~~

~~SECRET~~

